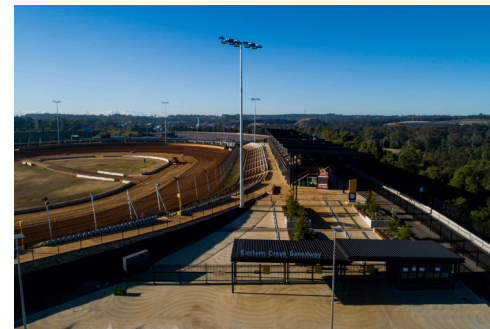
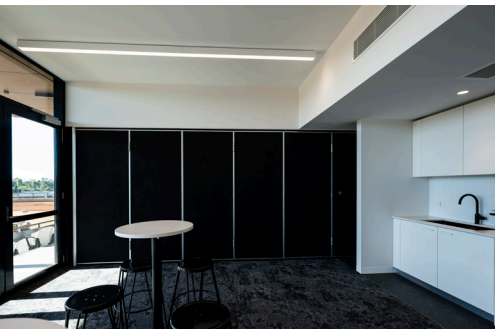


Sydney International Speedway

Client	Sydney Metro / Abergeldie Complex Infrastructure
Project	Sydney International Speedway
Location	Sydney, NSW
Services	Full Turnkey Solution



Overview

Fleetwood's delivery of modular components completed the world-class NSW International Speedway. With the car racing track relocated from older premises, new facilities were purpose-built to hold major state, national and international speedway events. Fleetwood was engaged by Abergeldie Complex Infrastructure, who held the principal contract with the govt. client Sydney Metro. Abergeldie supplied the steel structure.

Fleetwood then used modular construction to provide to high-standard specifications. The architecturally designed buildings are accessibility compliant, including lifts, stairways and seating. The corporate boxes were specifically designed with floor to ceiling windows giving an optimal viewing experience for spectators.

Solution

The project team innovated to deliver a breathtaking diversity of complex buildings in trying conditions. Access to the site for this was majorly disrupted during in 2021 and 2022 with one of wettest years on record and unique COVID-19 restrictions, labor shortages and supply delays.

Facing unprecedented challenges, the success of this large-scale project involved significant stakeholder collaboration to implement solutions to achieve desired outcomes in line with Sydney Metro's final specifications across corporate boxes, media boxes, amenities, ticket booth, food outlets, communications and plant room components.

Benefits

Sydney Metro selected offsite modular construction as this incredibly complex project could not have been delivered cost effectively through traditional in-situ construction, especially in the given timeframes.

Materials and finishes specifications were optimized in response to the project brief and budget, along with careful consideration of health, safety, quality, environment and the specific site. Design, services, structural systems and construction methods satisfied the National Construction Code's high benchmark standards.

This high-quality international speedway facility delivered on client expectations for a high-quality and cost-effective solution, with the project delivery helping to support local industry and jobs during the peak of the pandemic.

