



Image for illustration purposes only

## Cooinda

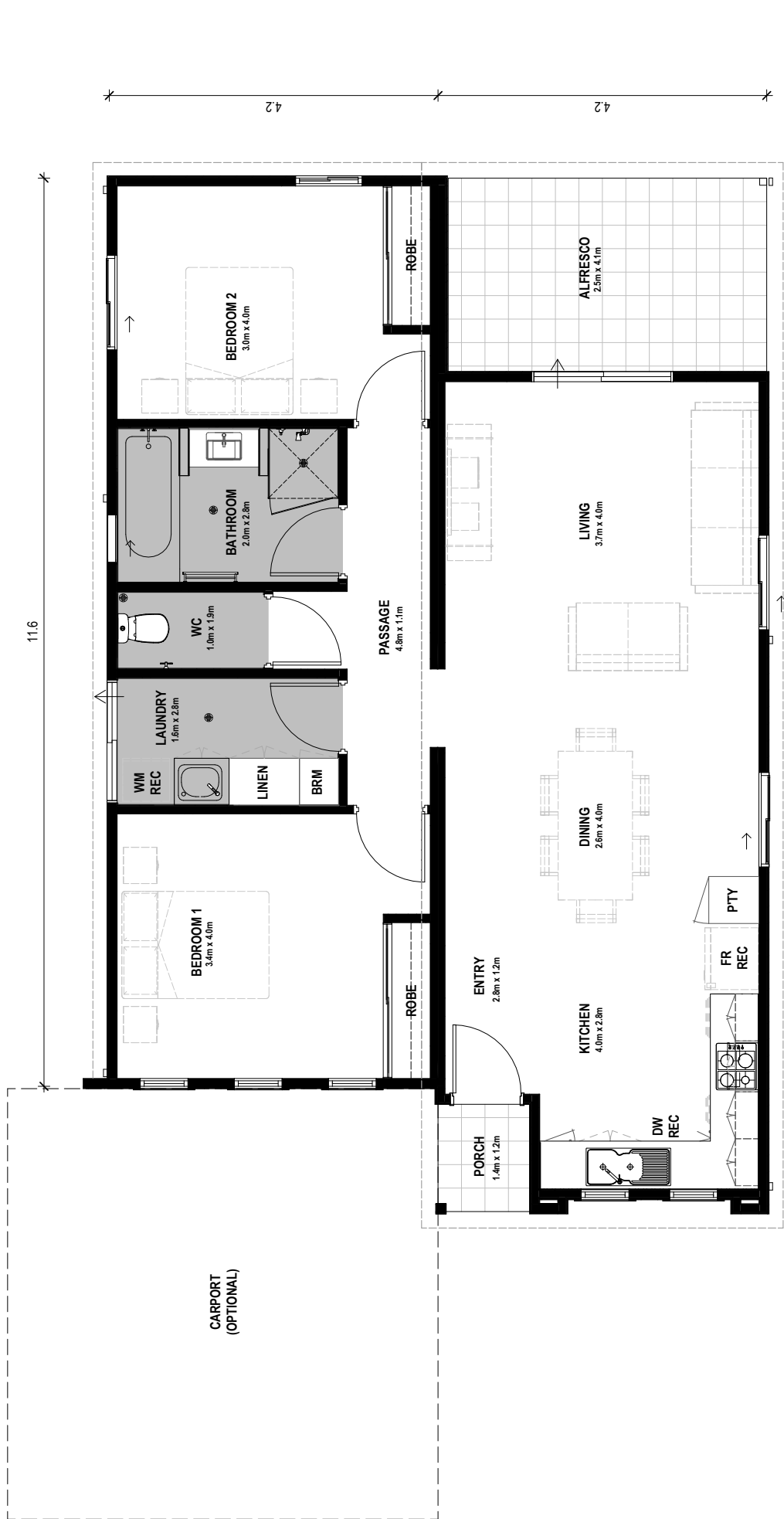
2  1 



Cooinda is a charming two-bedroom home featuring open plan living and a spacious kitchen area that provides plenty of natural light and entertaining space.

This home is suitable for lifestyle villages, social and community housing.

- 2 bedroom x 1 bathroom
- 600mm appliance package
- Reverse Cycle Air Conditioning
- Internal wall painting
- Quality floor coverings
- Window treatments
- Internal and external light fittings
- Stylish bathroom
- Delivery options available



AREAS	
LIVING	93.0m <sup>2</sup>
PORCH	1.6m <sup>2</sup>
ALFRESCO	10.0m <sup>2</sup>
TOTAL	104.6m <sup>2</sup>

13.2

