



THE WUNDINA

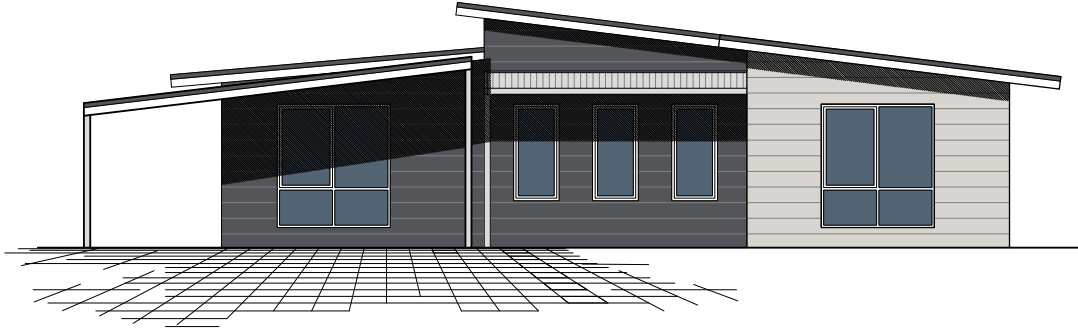


This modern and spacious 4x2 home designed for family living, cooking and entertaining.

The large kitchen is a chef's delight with a large walk-in pantry and plenty of bench and cooking space. This open-plan design is perfect for family interaction and entertaining.

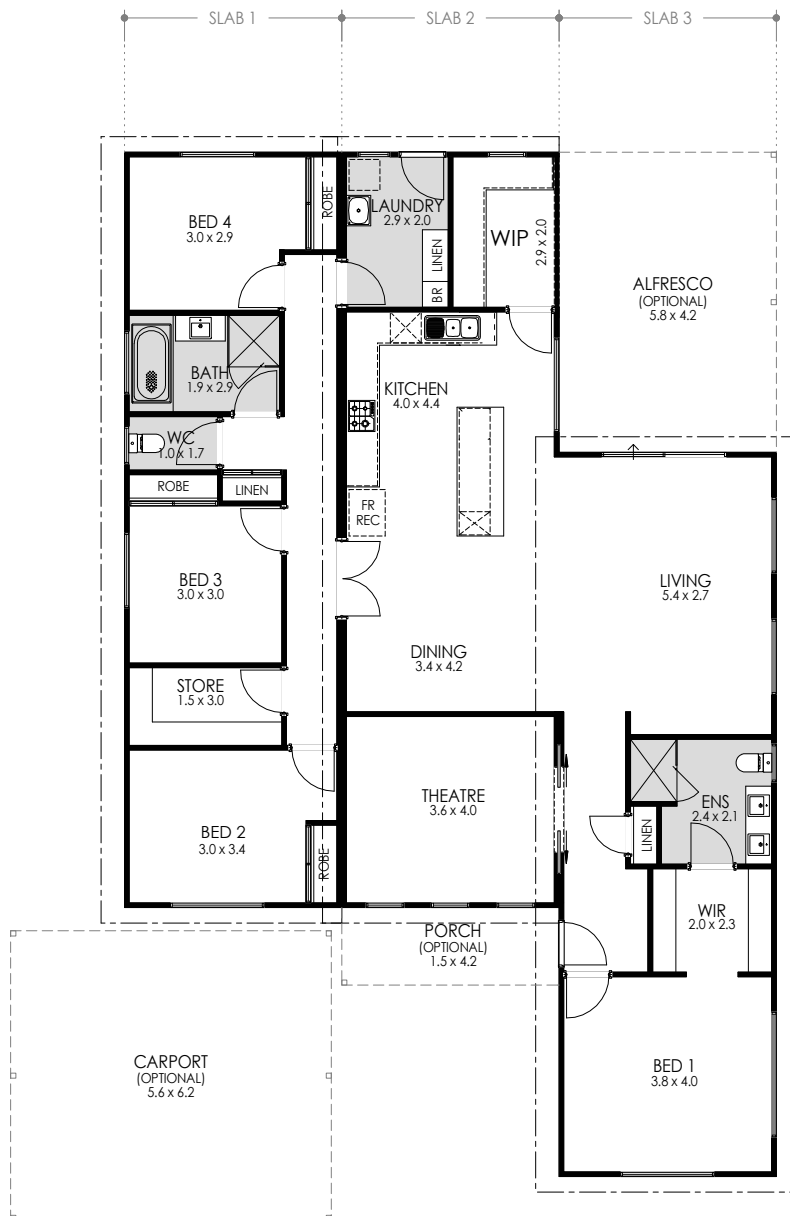
The indoor and outdoor living areas are well connected and there is an option to include an outdoor alfresco. The Wundina is the perfect transportable country home with a modern twist or an alternative building option for metropolitan living.

- 4 Bedrooms x 2 Bathrooms
- Theatre room
- Open floor plan with an optional outdoor alfresco
- Modern kitchen with walk-in pantry
- Quality kitchen appliance package
- Floor coverings, internal wall painting and window treatments all included
- Delivery options throughout WA
- Optional carport



FRONT ELEVATION

1:100



| AREAS | |
|---------------------------------|---------------------------|
| HOUSE AREA: | 181.4m ² |
| ALFRESCO (OPTIONAL): | 24.4m ² |
| CARPORT (OPTIONAL): | 34.7m ² |
| PORCH (OPTIONAL): | 6.30m ² |
| TOTAL AREA: | 246.8m² |
| SLAB 1 (LENGTH x WIDTH): | 14.2m x 4.2m |
| SLAB 2 (LENGTH x WIDTH): | 14.2m x 4.2m |
| SLAB 3 (LENGTH x WIDTH): | 14.0m x 4.2m |
| CEILING HEIGHTS @ 2410mm | |
| UNLESS OTHERWISE NOTED | |

FLOOR PLAN

1:100

✉ sales@fleetwood.com.au

☎ Freecall 1300 123 272

*Images are for illustration purposes only

