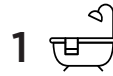




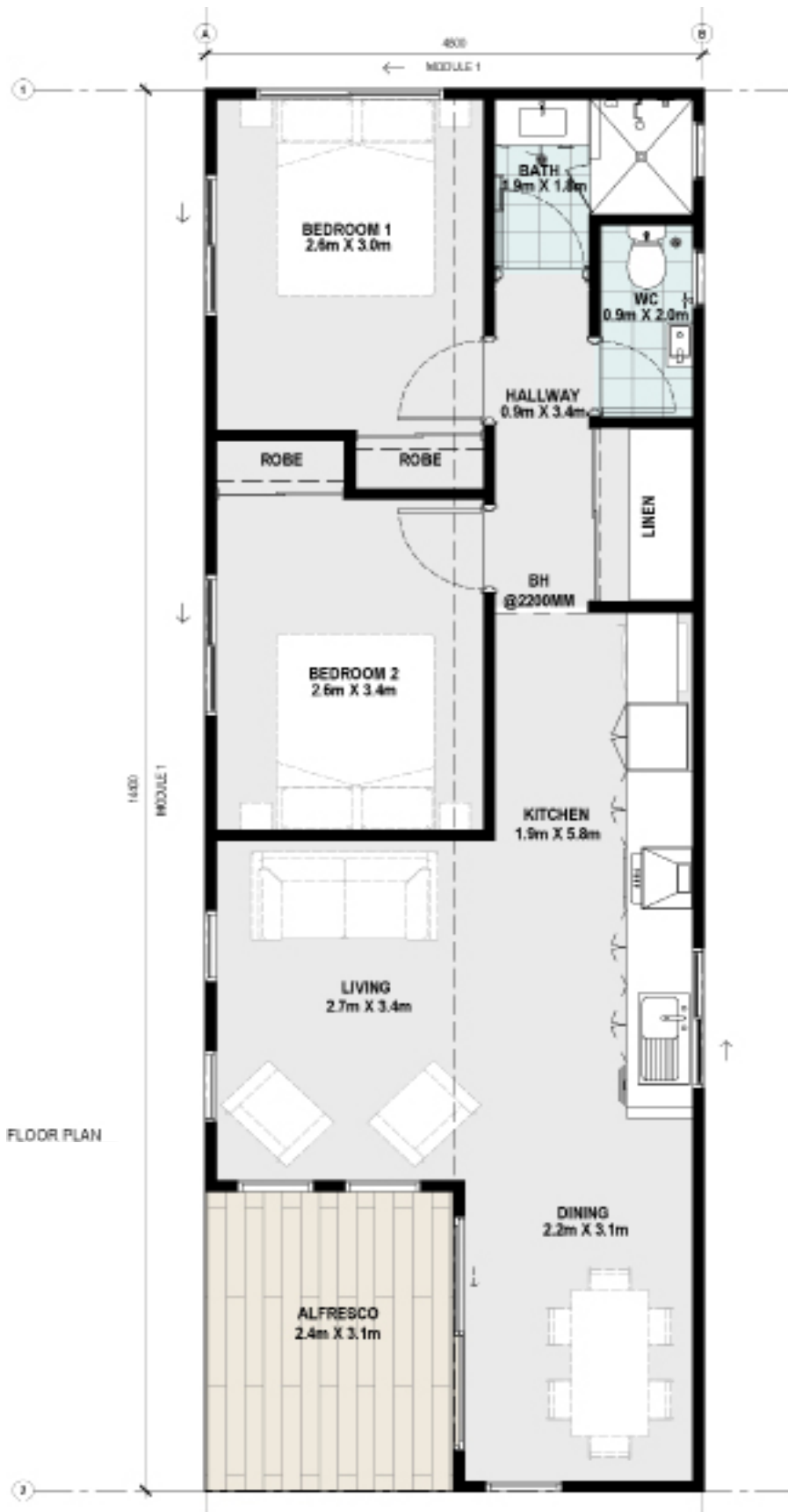
THE TROPICANA



The Tropicana is a modern twist on the Ridge, providing an edgy look and feel but with separate dining and living areas along with a corner alfresco for outside entertaining.

Ideal for short term accommodation with entertaining in mind. A key feature of the Tropicana provides a great connection between its inside living and dining areas to an alfresco.

- 2 bedroom x 1 bathroom
- 600mm European appliance package
- Reverse Cycle Air Conditioning
- Internal wall painting
- Quality floor coverings
- Window treatments
- Internal and external light fittings
- Stylish bathroom
- Delivery options available



AREAS	
LIVING	58m ²
VERANDAH	7.4m ²
TOTAL	65.4m ²

SLAB = 14.4m x 4.8m
 CEILING HEIGHT @ 2410mm
 UNLESS OTHERWISE NOTED

✉ sales@fleetwood.com.au

☎ Freecall 1300 123 272

*Images are for illustration purposes only

