



THE TELFER

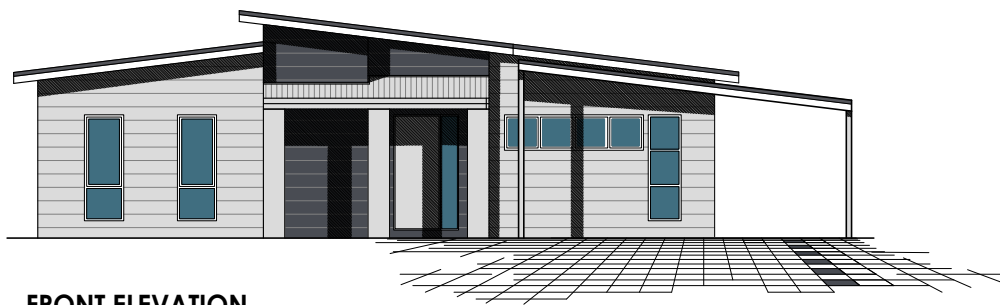


Modern and spacious home designed for family living and entertaining.

The Telfer ticks all the boxes and offers an impressive range of features and fixtures. The open-plan is designed for interaction; the kitchen is perfectly positioned to overlook the dining and family areas, and the optional outdoor alfresco make this the ultimate family home and entertainers delight.

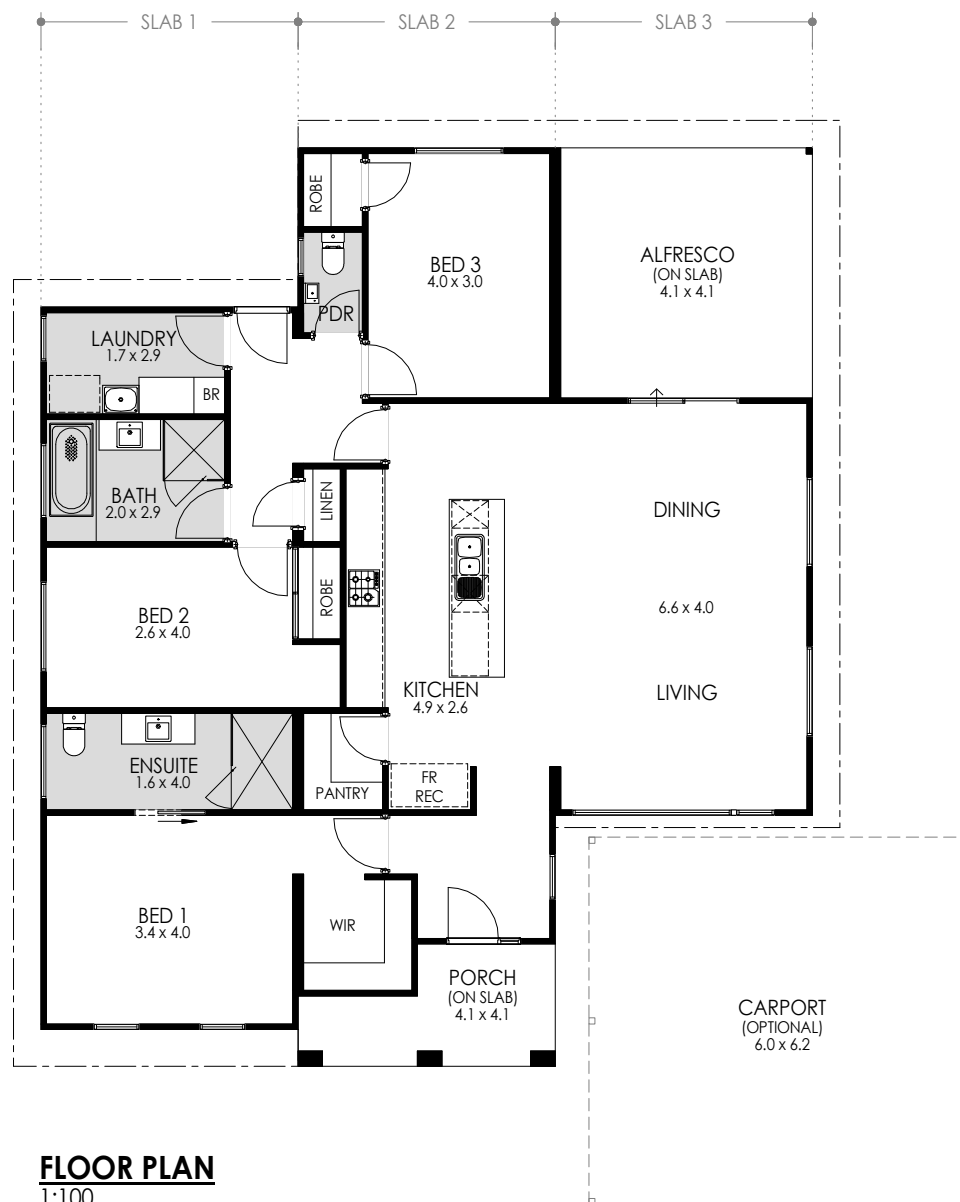
The Telfer is an award winning home, consecutively winning the HIA Perth Transportable Home of the Year for 2012 and 2013.

- 3 Bedrooms x 2 Bathrooms
- Easily customised for additional rooms
- Galley style kitchen with walk-in pantry
- Carport optional
- Internal and external lighting
- Wall painting, window treatments and main flooring all included.
- Delivery options throughout WA available



FRONT ELEVATION

1:100



FLOOR PLAN

1:100

AREAS	
HOUSE AREA:	134.8m ²
ALFRESCO:	16.8m ²
PORCH:	6.7m ²
CARPORT (OPTIONAL):	37.2m ²
TOTAL AREA:	158.1m²
SLAB 1 (LENGTH x WIDTH):	11.8m x 4.2m
SLAB 2 (LENGTH x WIDTH):	15.0m x 4.2m
SLAB 3 (LENGTH x WIDTH):	10.9m x 4.2m
CEILING HEIGHTS @ 2410mm	
UNLESS OTHERWISE NOTED	

✉ sales@fleetwood.com.au

☎ Freecall 1300 123 272

**Images are for illustration purposes only*

