



THE SOUTHSIDE

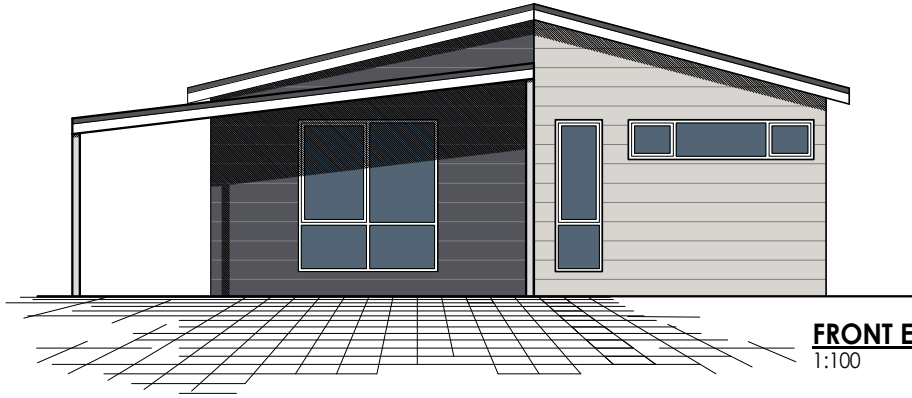


The Southside's modern design seamlessly integrates the open plan living areas with a galley style kitchen which leads to the outdoor alfresco area.

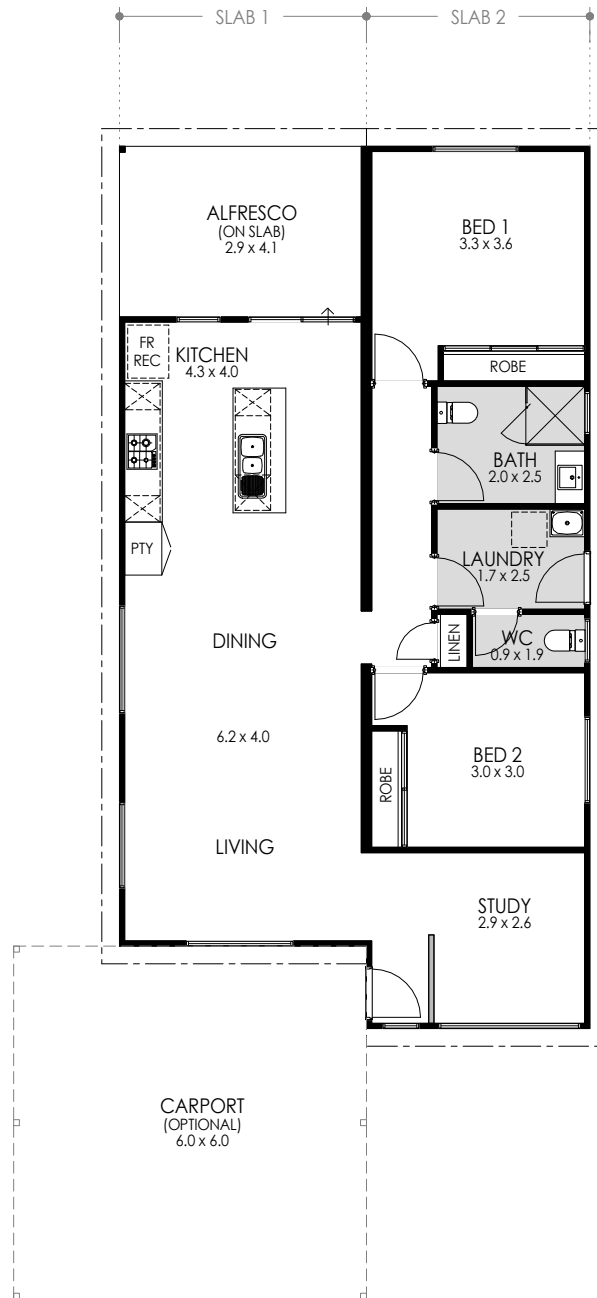
The southside features two spacious bedrooms plus a study. The laundry and separate WC are conveniently located in the centre of the home and offer access to the garden and outdoor areas.

The well-placed windows complement the Southside's design and welcome an abundance of bright and natural light.

- 2 Bedrooms x 1.5 bathrooms
- Study Room
- Galley style kitchen with quality appliances
- Modern fixtures and fittings
- Various internal finishings available
- Contemporary or traditional finishes to exterior and interior available
- Outdoor alfresco on slab
- Optional carport
- Delivery options available throughout Australia



FRONT ELEVATION
1:100



AREAS	
HOUSE AREA:	102.2m ²
ALFRESCO:	11.9m ²
CARPORT (OPTIONAL):	36.0m ²
TOTAL AREA:	150.1m²
SLAB 1 (LENGTH x WIDTH):	13.6m x 4.2m
SLAB 2 (LENGTH x WIDTH):	15.0m x 3.8m
CEILING HEIGHTS @ 2410mm	
UNLESS OTHERWISE NOTED	

