



THE SHERLOCK

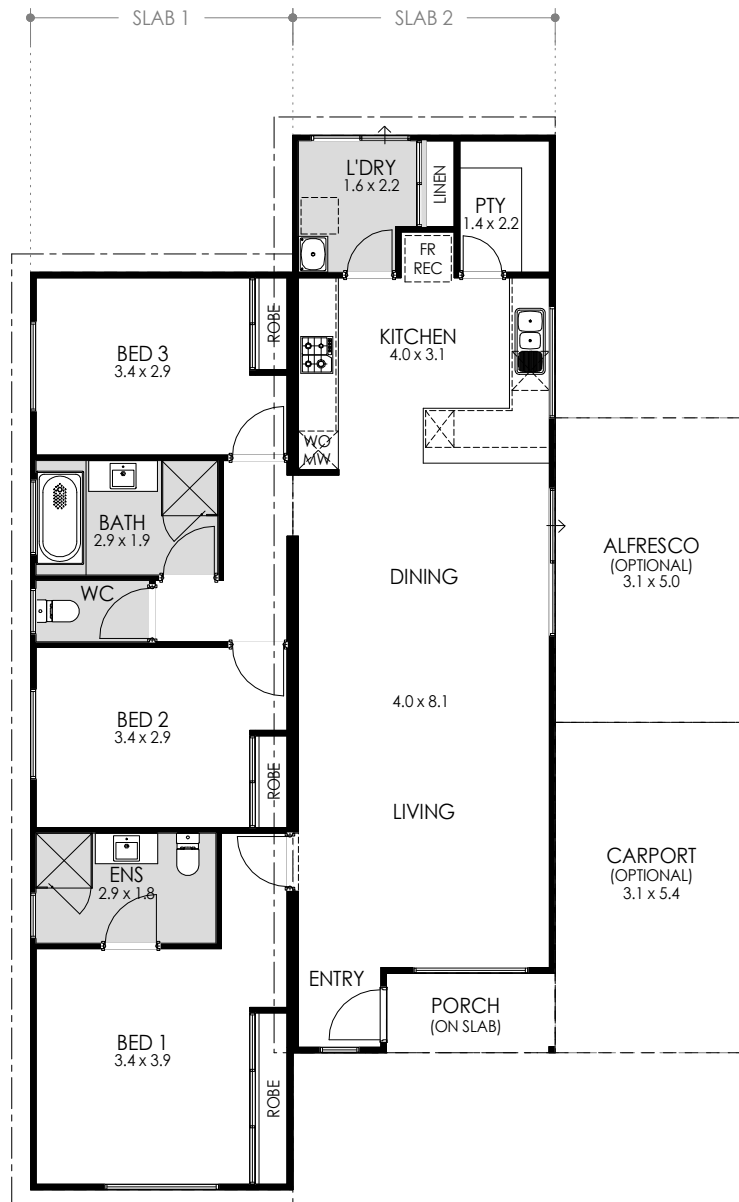
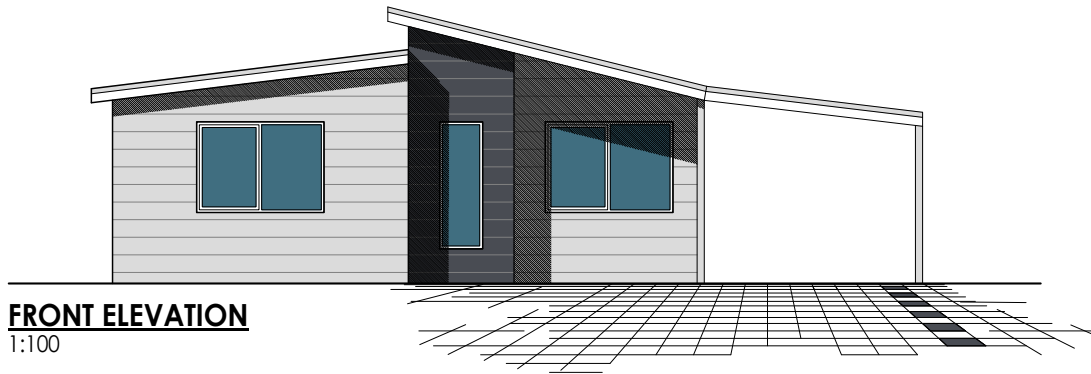


The Sherlock is a modern three bedroom modular home, designed to feel spacious and inviting.

The skillion roof is an aesthetically appealing addition to the Sherlock's contemporary design, complemented with large open windows and entry ways welcoming an abundance of natural light.

Fleetwood offers a full turn-key service. Our pre-manufactured homes are built on our site, delivered to your property and assembled. All you need to do is move in!

- 3 bedrooms x 2 bathrooms
- Ample kitchen space with plenty of storage
- Large undercover alfresco and carport optional
- Internal and external light fittings
- Internal wall painting, window treatments and main flooring all included
- Delivery options throughout WA available



AREAS	
HOUSE AREA:	122.5m ²
PORCH:	3.5m ²
ALFRESCO (OPTIONAL):	15.4m ²
CARPOT (OPTIONAL):	16.7m ²
TOTAL AREA:	158.1m²
SLAB 1 (LENGTH x WIDTH):	15.0m x 4.2m
SLAB 2 (LENGTH x WIDTH):	15.0m x 4.2m
CEILING HEIGHTS @ 2410mm UNLESS OTHERWISE NOTED	

✉ sales@fleetwood.com.au

☎ Freecall 1300 123 272

**Images are for illustration purposes only*

