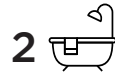




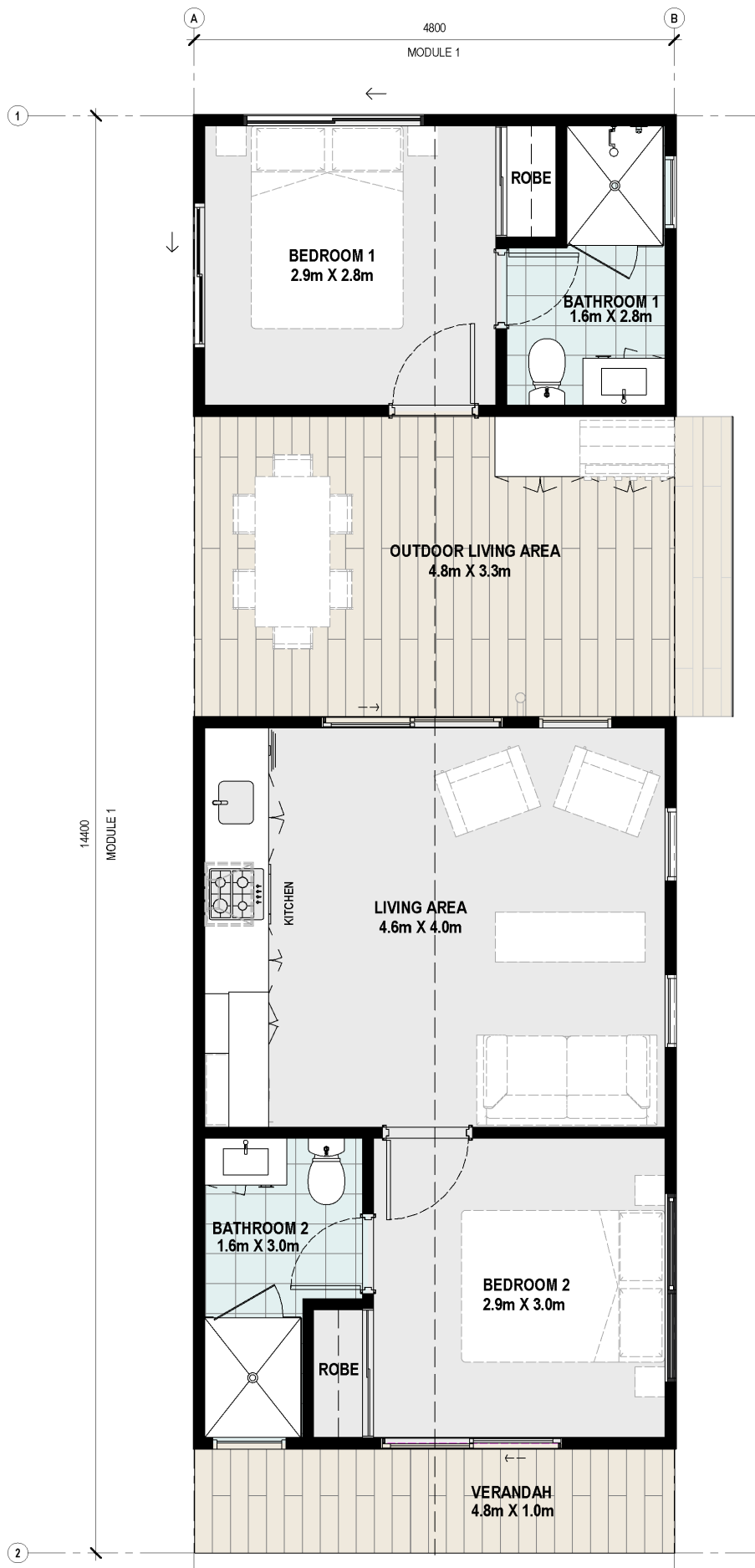
## THE SEALLA



The Sealla is a new and innovative dual chalet design perfect for accommodating multiple couples and families within separate connecting rooms.

An ideal self-contained villa, the Sealla provides spacious indoor and outdoor living areas, which is perfect for wineries and holiday park's looking to provide guests with quality living facilities.

- 2 bedroom x 2 bathroom
- 600mm European appliance package
- Reverse Cycle Air Conditioning
- Internal wall painting
- Quality floor coverings
- Window treatments
- Internal and external light fittings
- Stylish bathroom
- Delivery options available



AREAS	
LIVING	50.2m <sup>2</sup>
ALFRESCO	15.8m <sup>2</sup>
VERANDAH	4.8m <sup>2</sup>
TOTAL	70.8m <sup>2</sup>

SLAB = 14.4m x 4.8m  
 CEILING HEIGHT @ 2410mm  
 UNLESS OTHERWISE NOTED

✉ sales@fleetwood.com.au

☎ Freecall 1300 123 272

\*Images are for illustration purposes only

