



## THE REDGATE

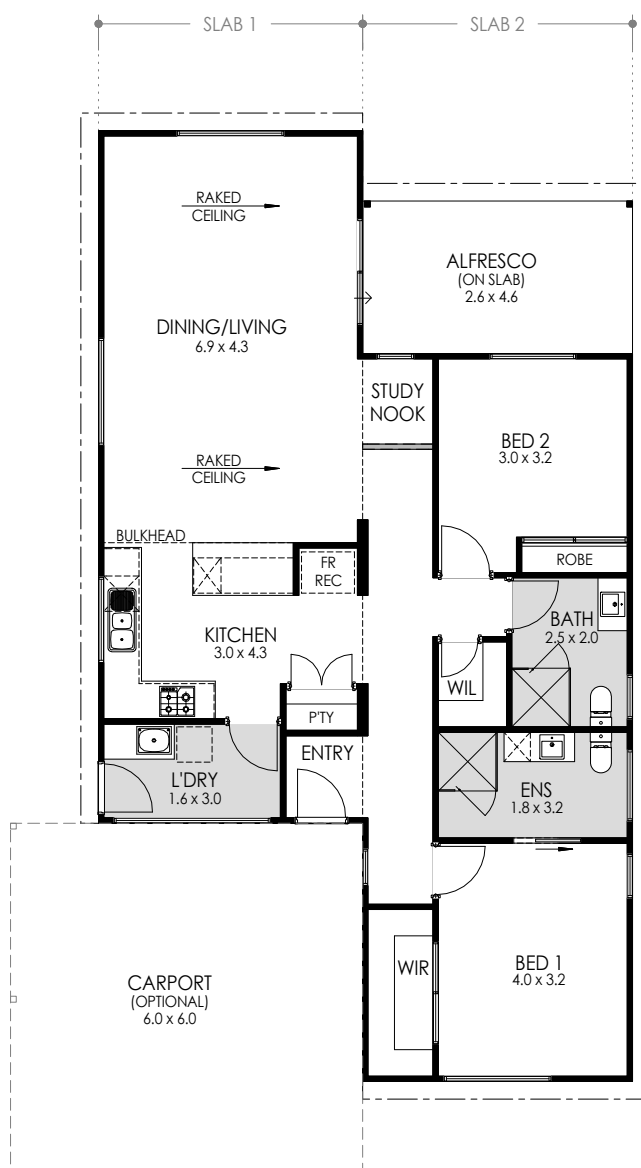
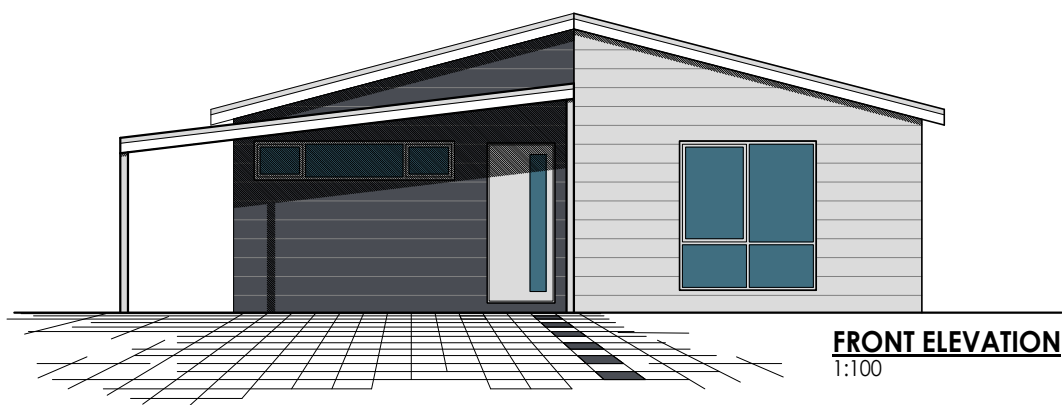


**The Redgate is a modern two bedroom home, designed to feel spacious and inviting.**

The galley style kitchen is central to the Redgate's spacious dining and living areas which open to the rear outdoor alfresco area providing the perfect space to relax or entertain guests.

The master bedroom features a private ensuite and walk in robe. A second full-size bathroom is adjacent to the second bedroom which has a large built in robe. The laundry is conveniently located behind the kitchen area, offering direct access to the carport.

- 2 Bedrooms x 2 bathrooms
- Open central floor plan with an alfresco off the living room
- Walk-in robe in master bedroom
- Galley style kitchen with quality appliances
- Quality floor coverings and window treatments
- Modern fixtures and fittings
- Internal and external painting
- Carport optional
- Delivery options available throughout Australia



AREAS	
HOUSE AREA:	110.1m <sup>2</sup>
ALFRESCO:	12.0m <sup>2</sup>
CARPORT (OPTIONAL):	36.0m <sup>2</sup>
<b>TOTAL AREA:</b>	<b>158.1m<sup>2</sup></b>
SLAB 1 (LENGTH x WIDTH):	11.8m x 4.5m
SLAB 2 (LENGTH x WIDTH):	15.0m x 4.6m
<b>CEILING HEIGHTS</b> @ 2410mm UNLESS OTHERWISE NOTED	

