




## THE NORTHPOINT

4 

2 

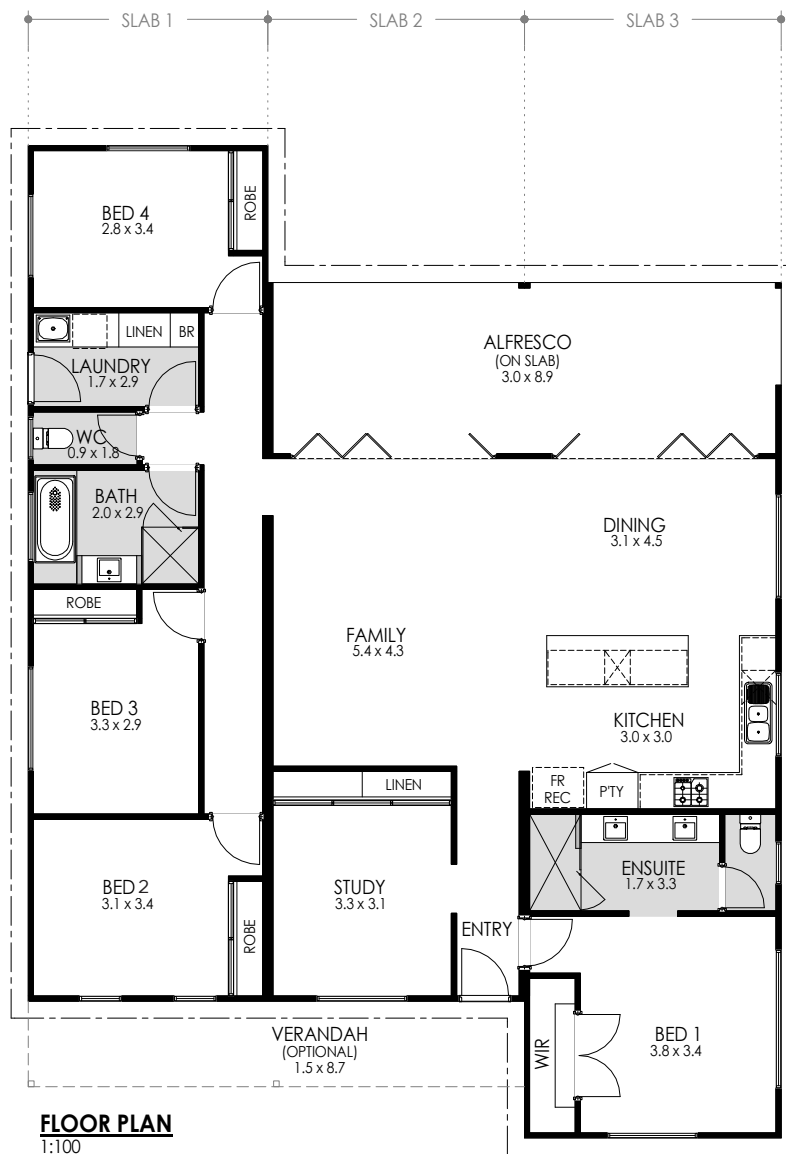
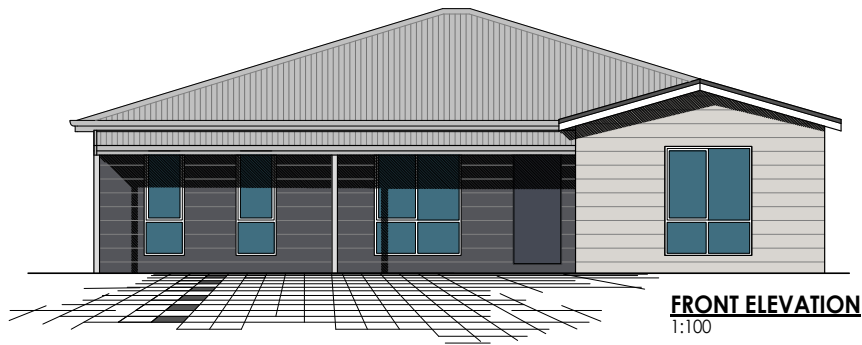


**The Northpoint is perfect to have your family and friends close by with this all in one open plan home.**

Kitchen, Family, Dining opening up to the generous size Alfresco via Bi-fold doors will help your views come alive and the sunsets memorable.

With 3 great sized Minor Bedrooms, a Master Bed w/Ensuite and a study which can be utilised as a 5th Bedroom, the Northpoint is a home you will be proud to call your own for many years to come.

- 4 Beds + Study w/built in robes
- Double size shower to ensuite w/double Vanity
- Galley style Kitchen w/generous size Island bench
- 900mm Appliance package
- 2710 high ceilings throughout w/ feature bulkhead to kitchen
- Internal wall painting, skirtings & window treatments included
- Reverse Cycle Split system Air-Con
- Feature Bi-Fold doors
- Tiled Alfresco included



AREAS	
HOUSE AREA:	160.6m <sup>2</sup>
ALFRESCO:	26.6m <sup>2</sup>
VERANDAH (OPTIONAL):	13.1m <sup>2</sup>
<b>TOTAL AREA:</b>	<b>200.3m<sup>2</sup></b>
SLAB 1 (LENGTH x WIDTH):	15.0m x 4.2m
SLAB 2 (LENGTH x WIDTH):	12.6m x 4.5m
SLAB 3 (LENGTH x WIDTH):	15.0m x 4.5m
<b>CEILING HEIGHTS @ 2410mm</b>	
UNLESS OTHERWISE NOTED	

✉ sales@fleetwood.com.au

☎ Freecall 1300 123 272

*\*Images are for illustration purposes only*

