



## THE MONASH



**The Monash has an open plan design boasting four spacious bedrooms, two bathrooms and a study.**

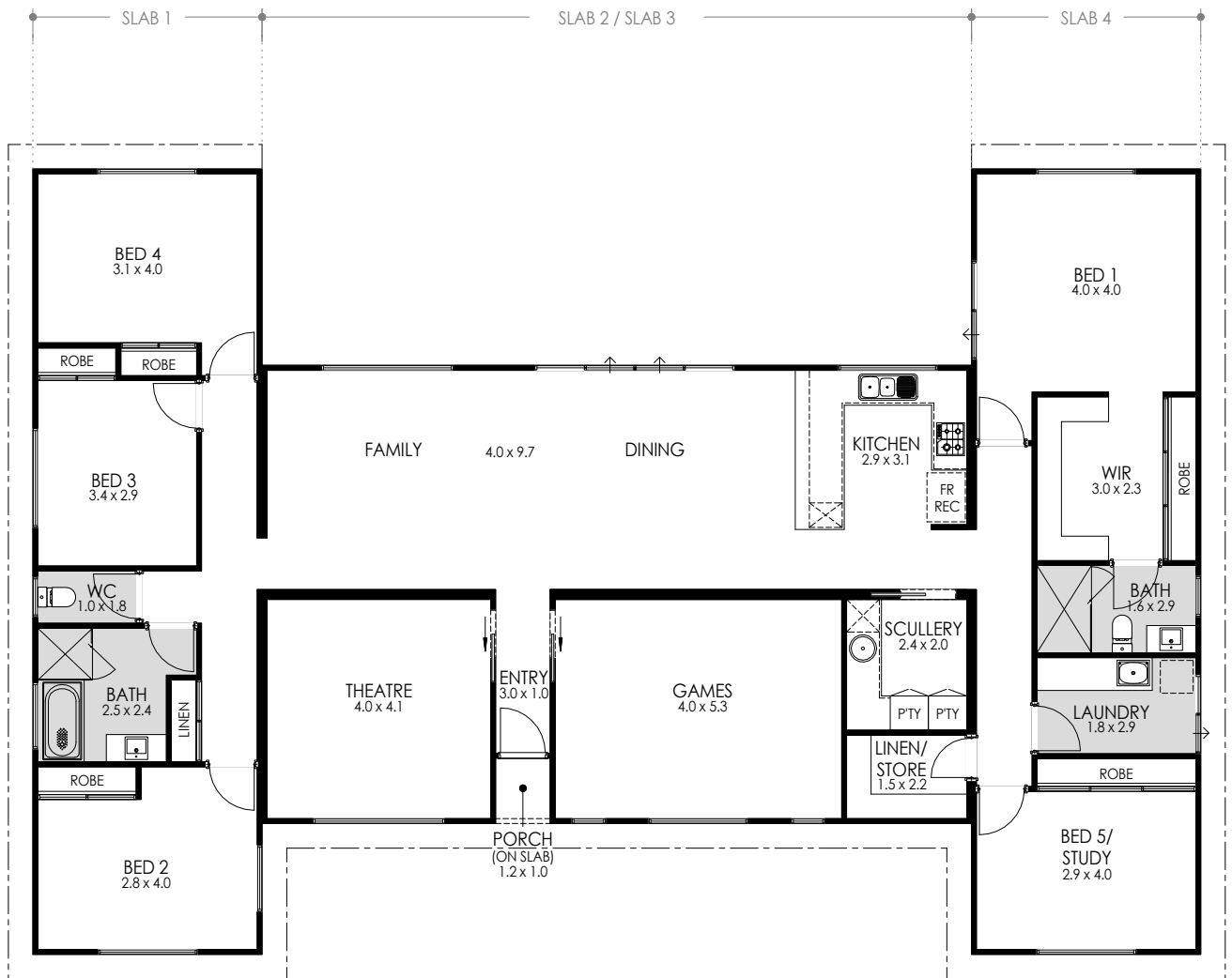
The open plan leads you through to an expansive kitchen, living and dining area. A spacious theatre and games room makes this the ultimate family home and entertainers delight.

The Monash is the perfect country home with a modern twist or an alternative building option for metropolitan living.

- 4 Bedrooms x 2 bathrooms
- Theatre and games room
- Study / 5th bedroom
- Open floor plan
- Large verandahs optional
- Internal wall painting, window treatments and main flooring all included



**FRONT ELEVATION**  
1:100



**FLOOR PLAN**  
1:100

AREAS	
HOUSE AREA:	229.0m <sup>2</sup>
PORCH:	1.2m <sup>2</sup>
<b>TOTAL AREA:</b>	<b>230.2m<sup>2</sup></b>
SLAB 1 (LENGTH x WIDTH):	14.4m x 4.2m
SLAB 2 (LENGTH x WIDTH):	13.0m x 4.2m
SLAB 3 (LENGTH x WIDTH):	13.0m x 4.2m
SLAB 4 (LENGTH x WIDTH):	14.4m x 4.2m
CEILING HEIGHTS @ 2410mm UNLESS OTHERWISE NOTED	