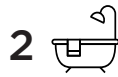




THE MADIGAN

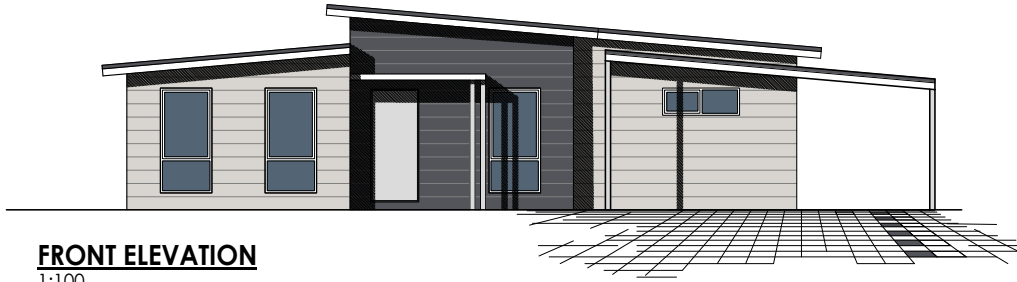


The Madigan is a fantastic design with everything the family needs. Featuring four spacious bedrooms, two bathrooms and a study room.

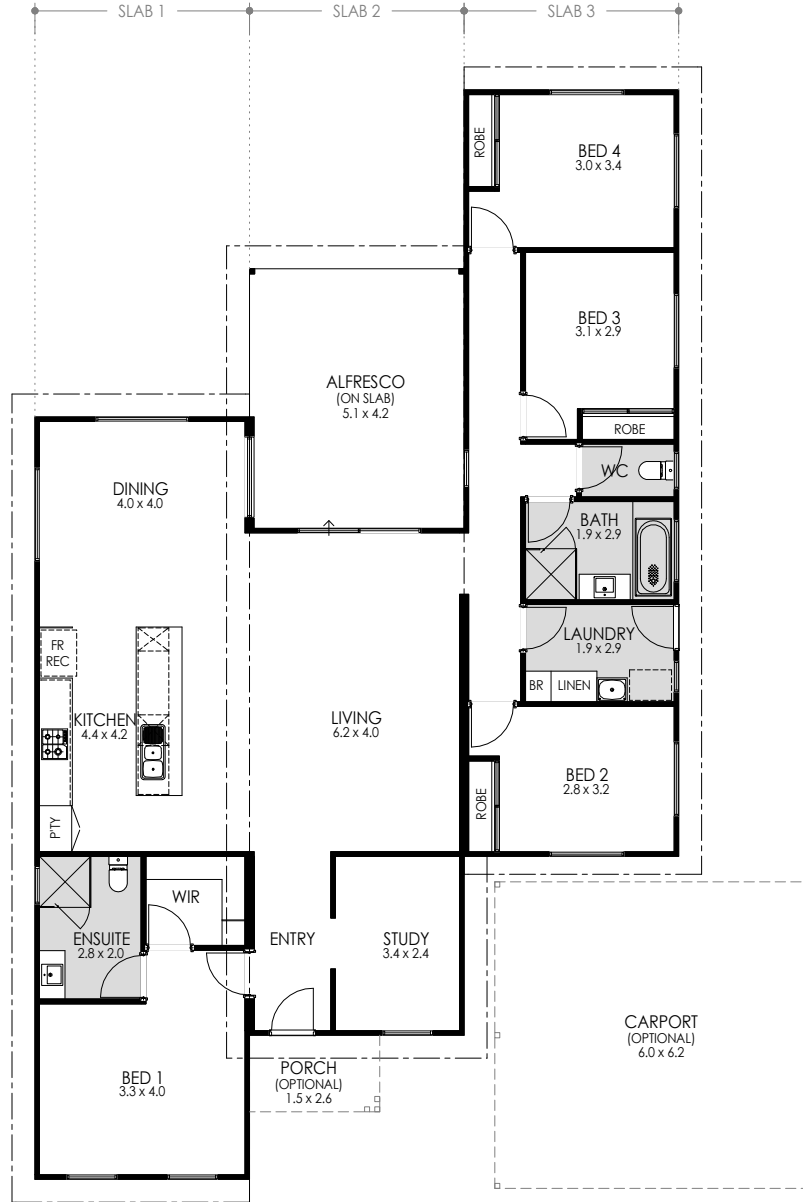
The galley style kitchen is central to the Madigan's spacious living areas and the outdoor alfresco provides the perfect entertaining hub for family and friends.

Fleetwood offers an alternative home building solution. Our high quality prefabricated homes are economical, sustainable and built efficiently. The Madigan can be tailored to suit your budget and building requirements.

- 4 Bedrooms x 2 Bathrooms
- Study room
- Large modern galley style kitchen with quality appliances
- High raking ceilings through entry and living
- Main flooring, internal wall painting and window treatments included
- Contemporary or traditional finishes to exterior and interior available



FRONT ELEVATION
1:100



AREAS	
HOUSE AREA:	167.5m ²
ALFRESCO:	21.1m ²
PORCH (OPTIONAL):	3.8m ²
CARPOR (OPTIONAL):	37.2m ²
TOTAL AREA:	229.6m²
SLAB 1 (LENGTH x WIDTH):	14.9m x 4.2m
SLAB 2 (LENGTH x WIDTH):	15.0m x 4.2m
SLAB 3 (LENGTH x WIDTH):	15.0m x 4.2m
CEILING HEIGHTS @ 2410mm UNLESS OTHERWISE NOTED	

FLOOR PLAN
1:100

