



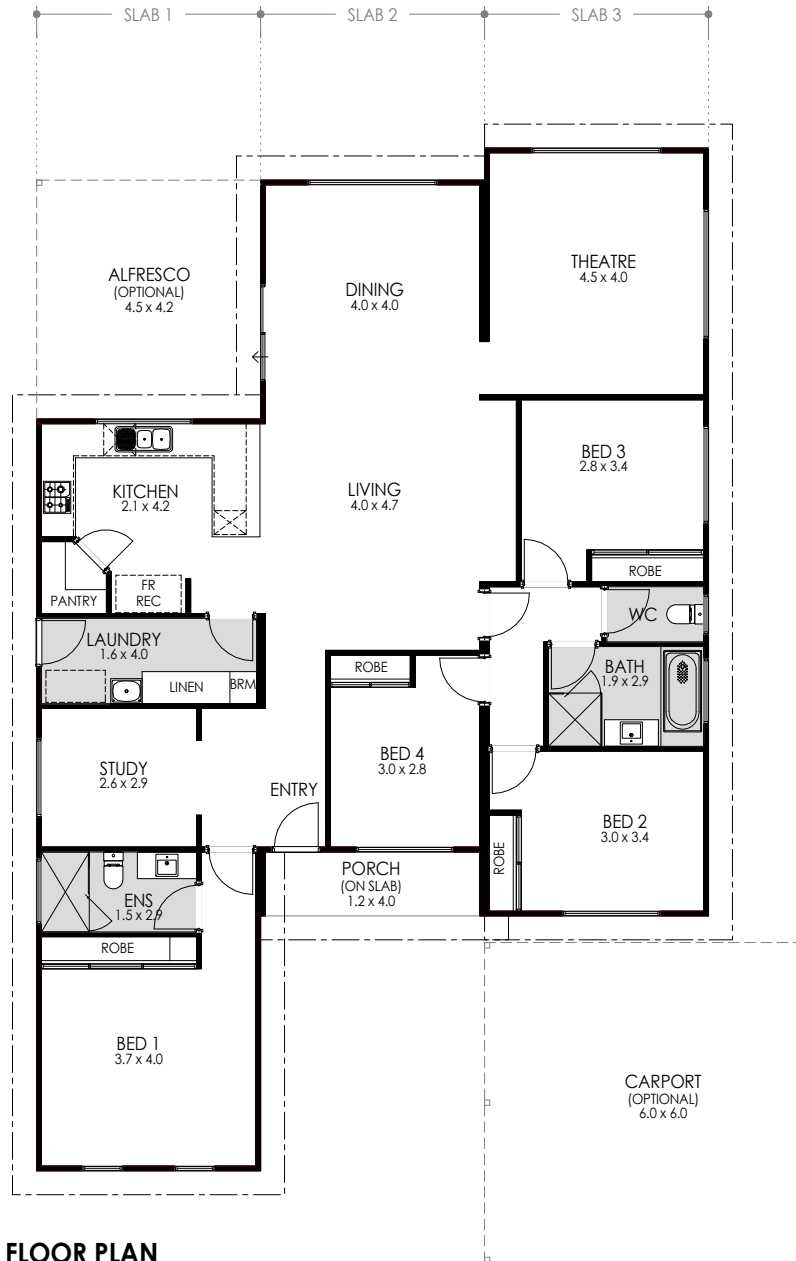
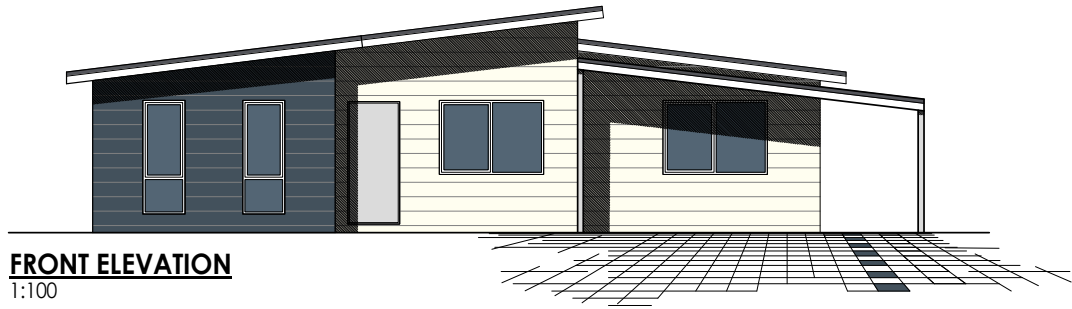
## THE IVANHOE



**Fantastic new design with everything the family needs. Four spacious bedrooms, two bathrooms and a central study.** The chef's kitchen overlooks the family, dining and alfresco area, plus there is a theatre room which could double as a formal lounge room or games room.

Fleetwood offers an alternative home building solution. Our high quality prefabricated homes are economical, sustainable and built efficiently.

- 4 Bedrooms x 2 Bathrooms
- Study and theatre room
- Open floor plan with an optional outdoor alfresco
- Modern kitchen with quality appliances
- Alternate elevations available
- Quality floor coverings, internal wall painting and window treatments included
- Optional carport



AREAS	
HOUSE AREA:	172.6m <sup>2</sup>
PORCH:	5.0m <sup>2</sup>
ALFRESCO (OPTIONAL):	18.8m <sup>2</sup>
CARPORT (OPTIONAL):	36.0m <sup>2</sup>
<b>TOTAL AREA:</b>	<b>232.4m<sup>2</sup></b>
SLAB 1 (LENGTH x WIDTH):	14.1m x 4.2m
SLAB 2 (LENGTH x WIDTH):	13.8m x 4.2m
SLAB 3 (LENGTH x WIDTH):	14.4m x 4.2m
<b>CEILING HEIGHTS @ 2410mm</b>	
UNLESS OTHERWISE NOTED	

**FLOOR PLAN**  
1:100

