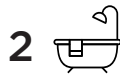




THE FLINDERS

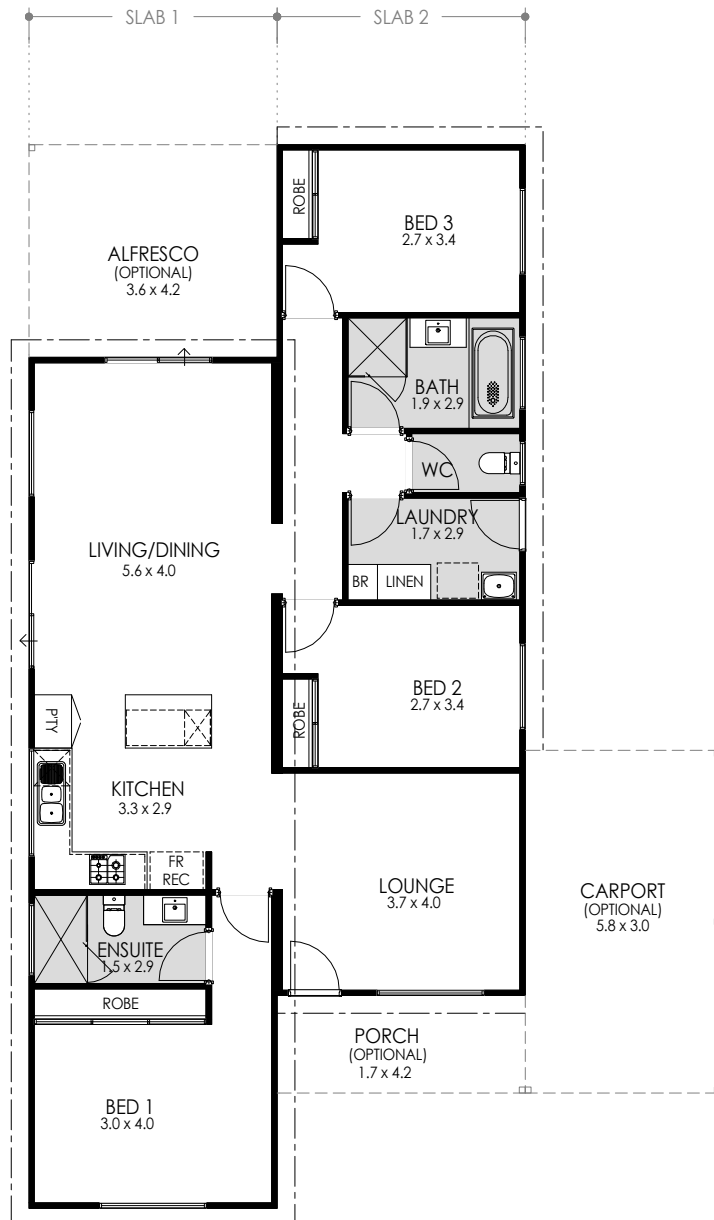
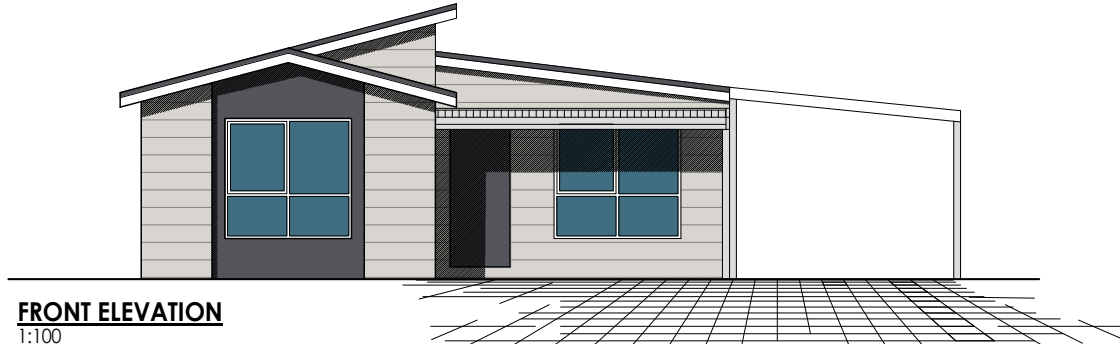


The Flinders is an excellent choice for a growing or established family.

The modern design accommodates practical family living featuring a large kitchen with ample bench space and complimented by three generously sized bedrooms separated from the living areas, ensuring family harmony. The formal lounge room doubles as a sanctuary for adults or could be used as a theatre room.

The Flinders is the perfect country home with a modern twist or an alternative building option for metropolitan living.

- 3 Bedrooms x 2 Bathrooms
- Family room and formal lounge room
- Quality floor coverings and window treatments included
- Internal and external light fittings
- Available in a range of cladding styles
- Carport, porch and alfresco optional
- Delivery options throughout WA



AREAS

HOUSE AREA:	121.0m ²
ALFRESCO:	15.1m ²
PORCH	6.9m ²
CARPORT (OPTIONAL):	19.1m ²
TOTAL AREA:	162.1m²
SLAB 1 (LENGTH x WIDTH):	14.4m x 4.2m
SLAB 2 (LENGTH x WIDTH):	14.4m x 4.2m

CEILING HEIGHTS @ 2410mm
UNLESS OTHERWISE NOTED

✉ sales@fleetwood.com.au

☎ Freecall 1300 123 272

**Images are for illustration purposes only*

