



THE BORANUP

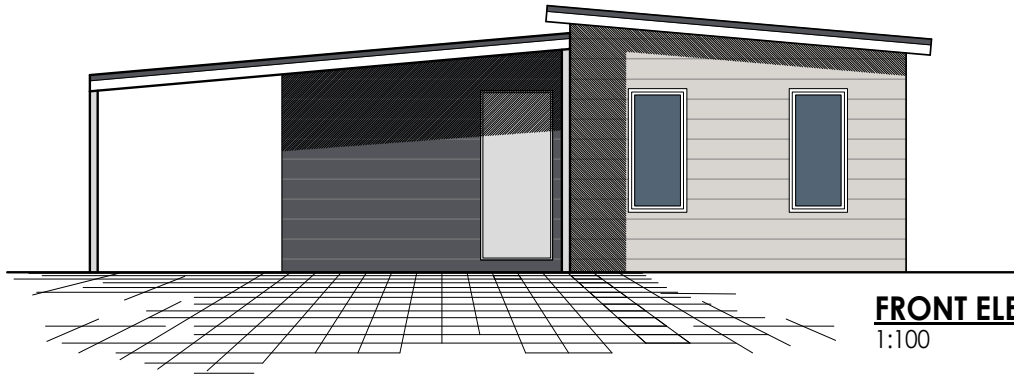


The outdoor alfresco is the feature of the Boranup's innovative design.

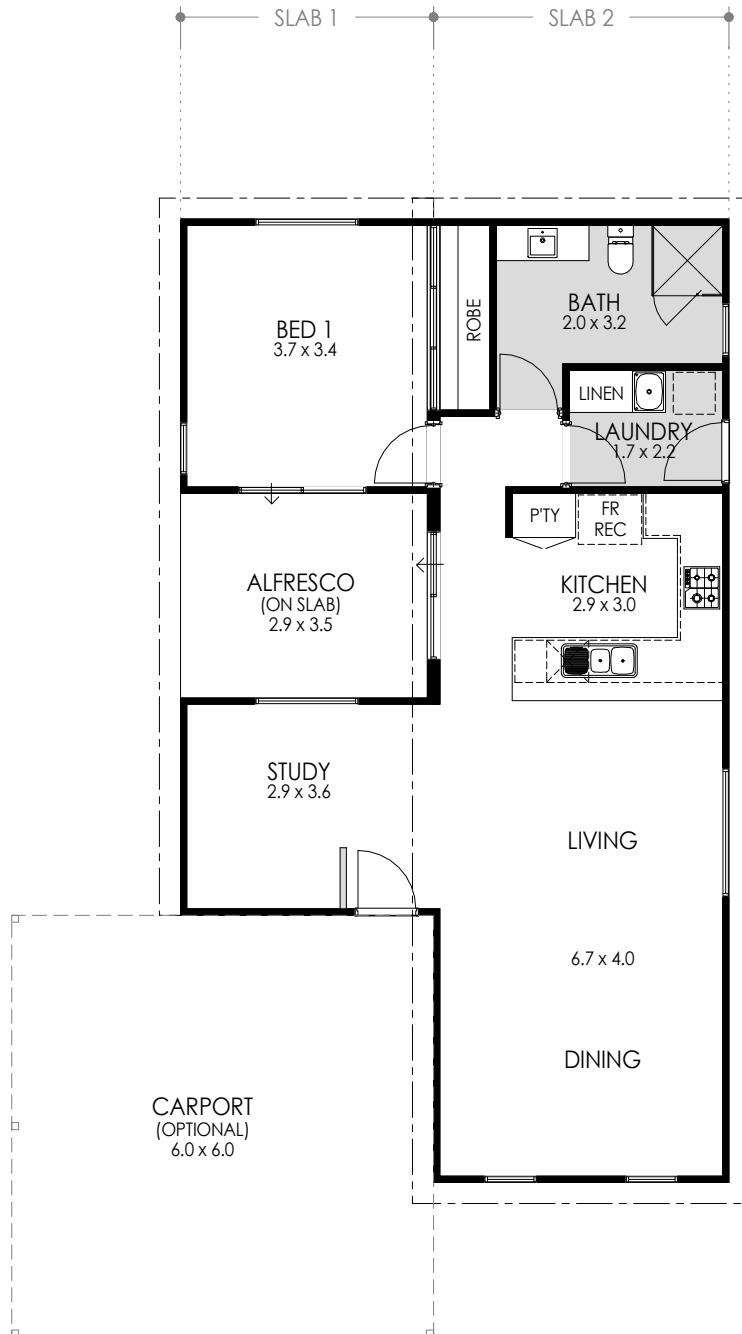
Centrally located and linked to both the master bedroom and kitchen areas; the alfresco would make the perfect space for entertaining, or to create your own private zen-inspired area to relax. The Boranup's spacious open-plan study and living areas are overlooked by a traditional style kitchen. The master bedroom, bathroom and laundry are conveniently located at the rear of the home, and the laundry offers access to outdoor areas.

The skillion roof is an aesthetically appealing addition to the Boranup's modern design.

- 1 Bedroom x 1 bathroom
- Open study
- Traditional style kitchen with quality appliances
- Modern fixtures and fittings
- Various internal finishings available
- Contemporary or traditional finishes to exterior and interior available
- Outdoor alfresco area
- Optional carport
- Delivery options available throughout Australia



FRONT ELEVATION
1:100



AREAS	
HOUSE AREA:	83.0m ²
ALFRESCO:	10.1m ²
CARPORT (OPTIONAL):	36.0m ²
TOTAL AREA:	129.1m²
SLAB 1 (LENGTH x WIDTH):	9.9m x 3.6m
SLAB 2 (LENGTH x WIDTH):	13.7m x 4.2m
CEILING HEIGHTS @ 2410mm UNLESS OTHERWISE NOTED	

