

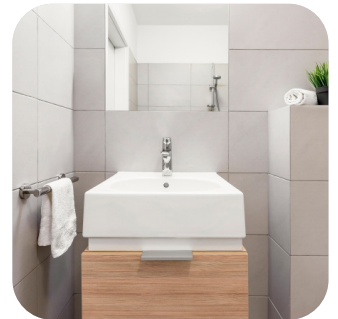


## THE SANTORINI

1-2



1

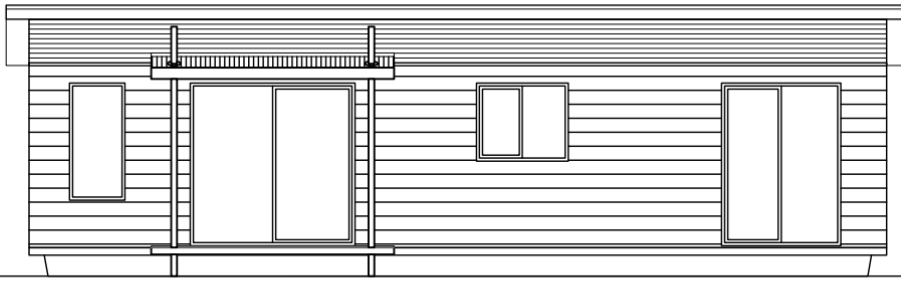


**The Santorini is a self-contained granny flat available with one or two bedrooms. The Santorini features a compact fully functional kitchen equipped with quality appliances, a lock away laundry and large bedrooms with built-in robes.**

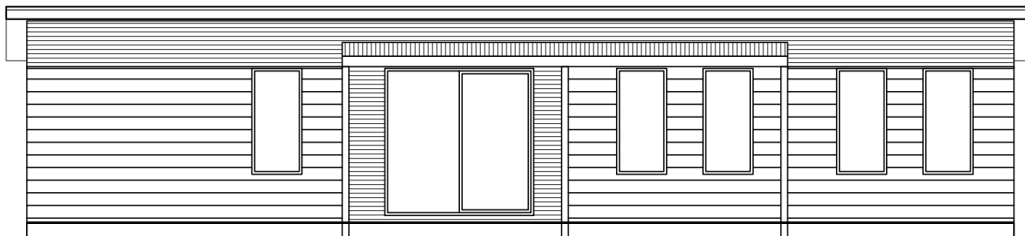
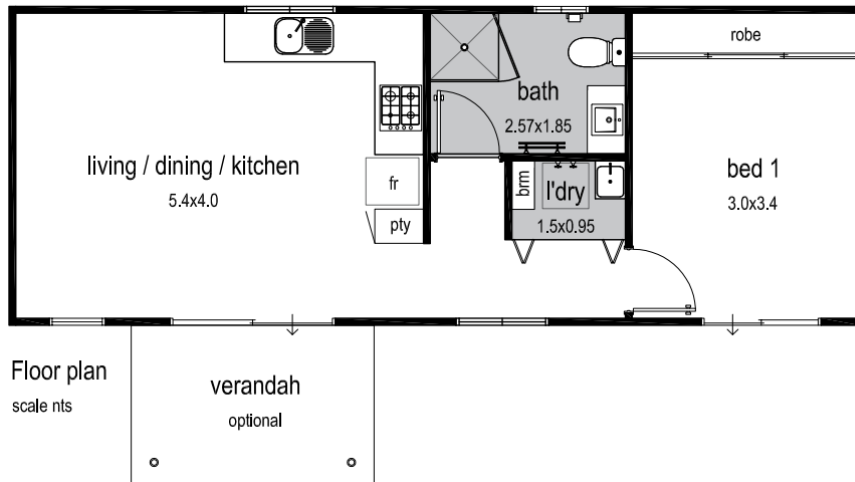
The open floor plan flows into an outdoor area of your choice and is complimented with large open windows welcoming an abundance of natural light.

Fleetwood's granny flats can be transported anywhere in WA, and provide the flexibility to move or relocate the unit should your requirements change.

- 1 or 2 bedrooms & 1 bathroom
- 600mm appliance package including rangehood
- Quality floor coverings
- Internal and external light fittings
- Internal wall painting and window treatments
- Reverse cycle split system AC
- Lock-away laundry
- Concrete or steel chassis
- Delivery options available



Elevation



Elevation

