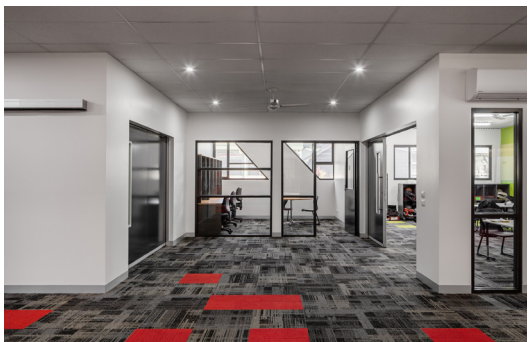
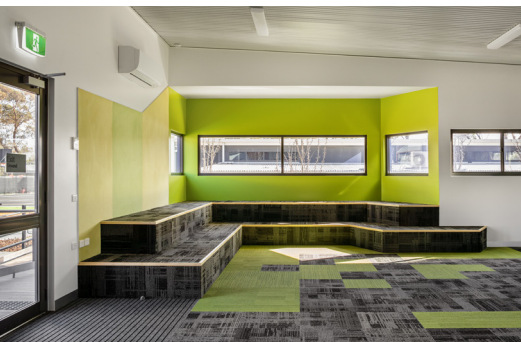


Frankston Heights Primary School

Client	VSBA - Permanent Modular Program
Project	Frankston Heights Primary School
Location	Victoria
Services	Full Turnkey Solution



Overview

Fleetwood was contracted to deliver a design and construct solution for Frankston Heights Primary School as part of the VSBA Permanent Modular Program. The school required a central hub for various learning environments plus staff and administration facilities for the second half of the 2018 school year. The building replaced the schools ageing transportable classrooms that had been servicing the school in recent times. In addition to the delivery and installation of the facility, Fleetwood completed further landscaping, outside play areas and a basketball court along with providing decanting to the school for the duration of the project.

Solution

The project saw 27 modules delivered over a week, which encompassed the two major sections of the building equating to over 1,000 square metres. A full turnkey solution covering all aspects of the delivery of the project was provided with Fleetwood responsible for the initial site set-up, removal of asbestos plus the off-site prefabrication of the building and all onsite works to surrounding areas. Fleetwood also provided the school with an outdoor decking that linked the multipurpose building to surrounding walkways and allowed for easy access to outdoor play areas and the new basketball court that was added to the scope of works mid project.

Benefits

The school is now able to house most of its student classes, administration staff and teachers out of the permanent modular facility. Moving from outdated light timber construction portables to a specifically designed education hub. The school has also been able to utilise a new library space, run group classes, have a commercial kitchen at its disposal and provide the students with a safe outside playing environment and walkways around the school for the future.

